

# Cori Redstone

Available Works <https://www.coriredstone.com/available-works-20222023-private>

Winter 2022 - 2023



## **Liftoff**

mixed media on unstretched canvas  
65x50 inches



***Sapphire Devotions***

acrylic & oil on stretched canvas (wired & ready to hang)

24 x 18 inches

signed verso



***Quartz Tesserae***

Mixed media on stretched canvas (ready to hang)

24 x 24 inches

signed verso



***View from Ensign Peak***  
mixed media on board  
48 x 24 inches



***Squeeze Machine***

mixed media on unstretched canvas (needs to be stretched or framed)

60 x 76 inches inches

signed verso



***The Cost***  
mixed media on board (wired & ready to hang)  
24 x 16 inches

Cori Redstone Studio



***E People (on B street)***  
acrylic on board (in gold frame, wired & ready to hang)  
16 x 12 inches



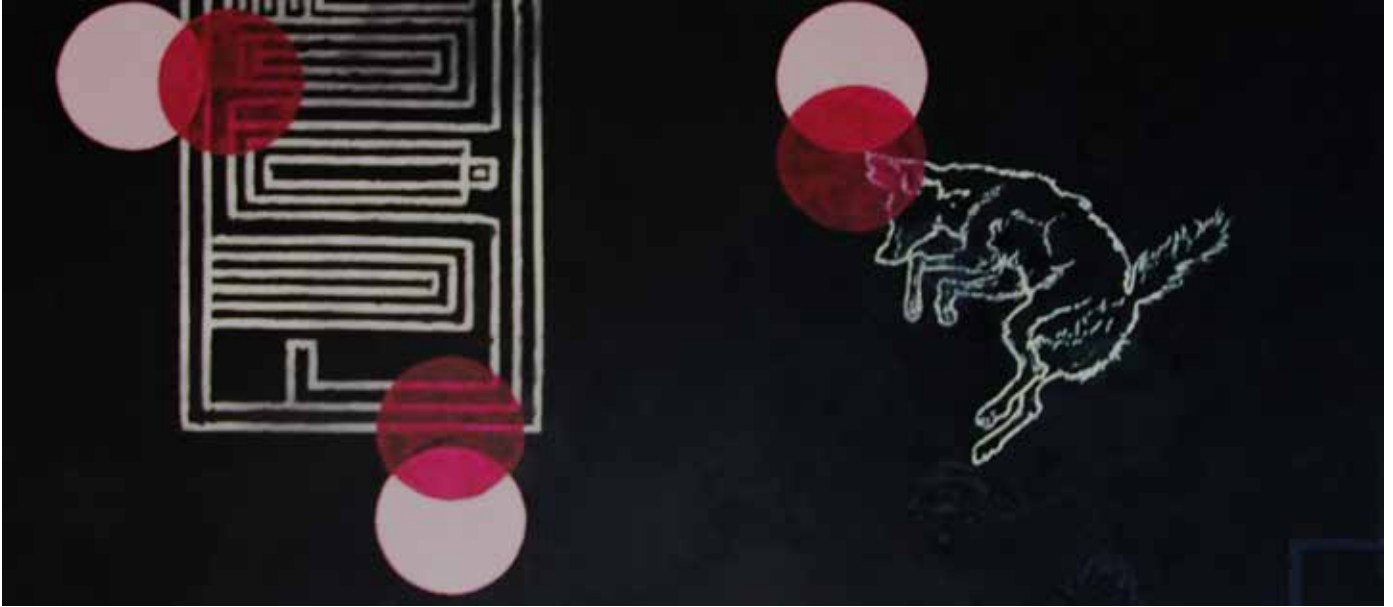
***Spiral Jetty***

mixed media on board (in deep gallery frame, wired & ready to hang)  
24 x 24 inches





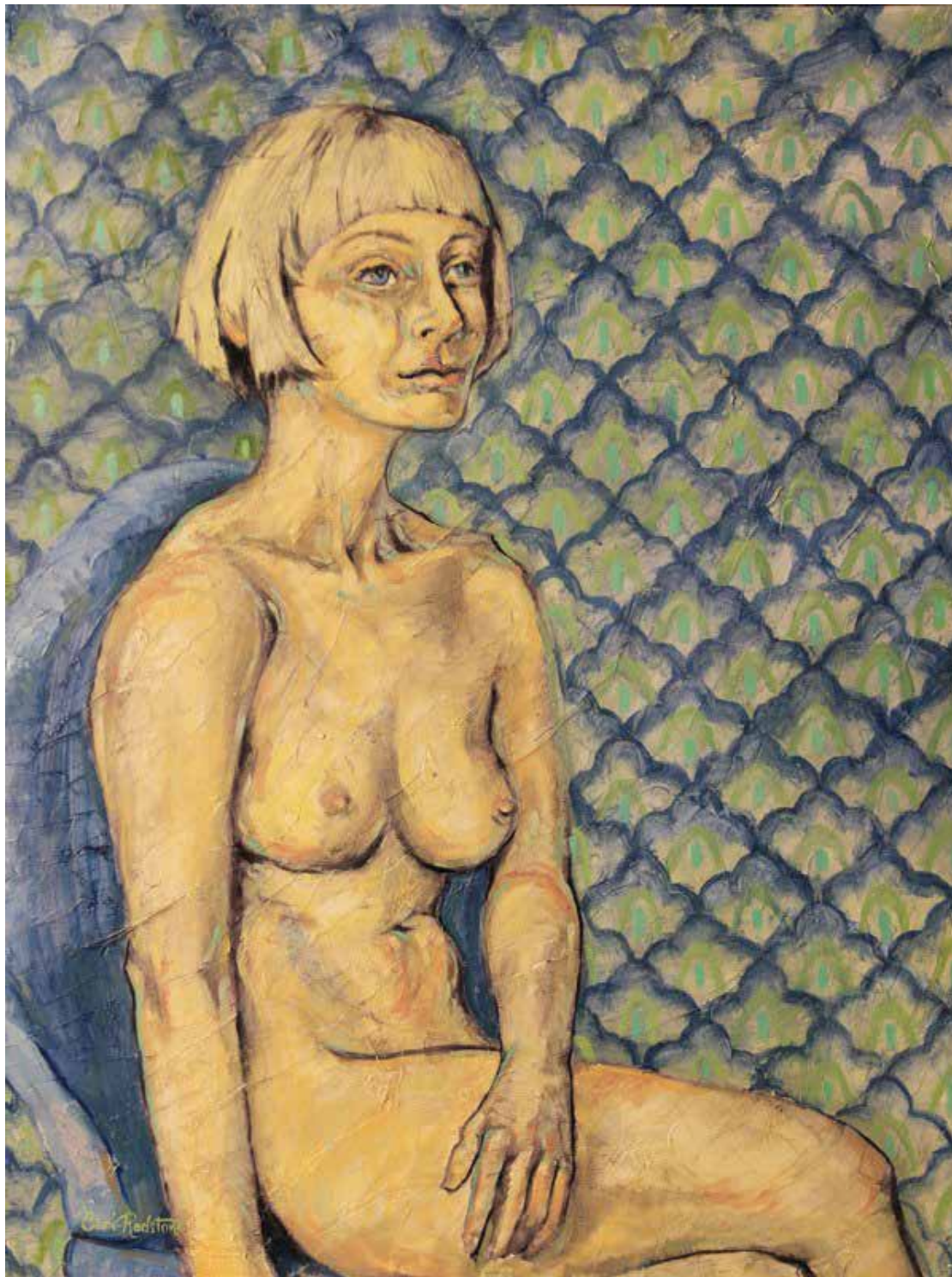
***Desertification***, 2018  
mixed media on canvas (wired & ready to hang)  
30x10 inches



***Coyote shatters the binary***  
mixed media on canvas (ready to hang)  
18 x 40 inches

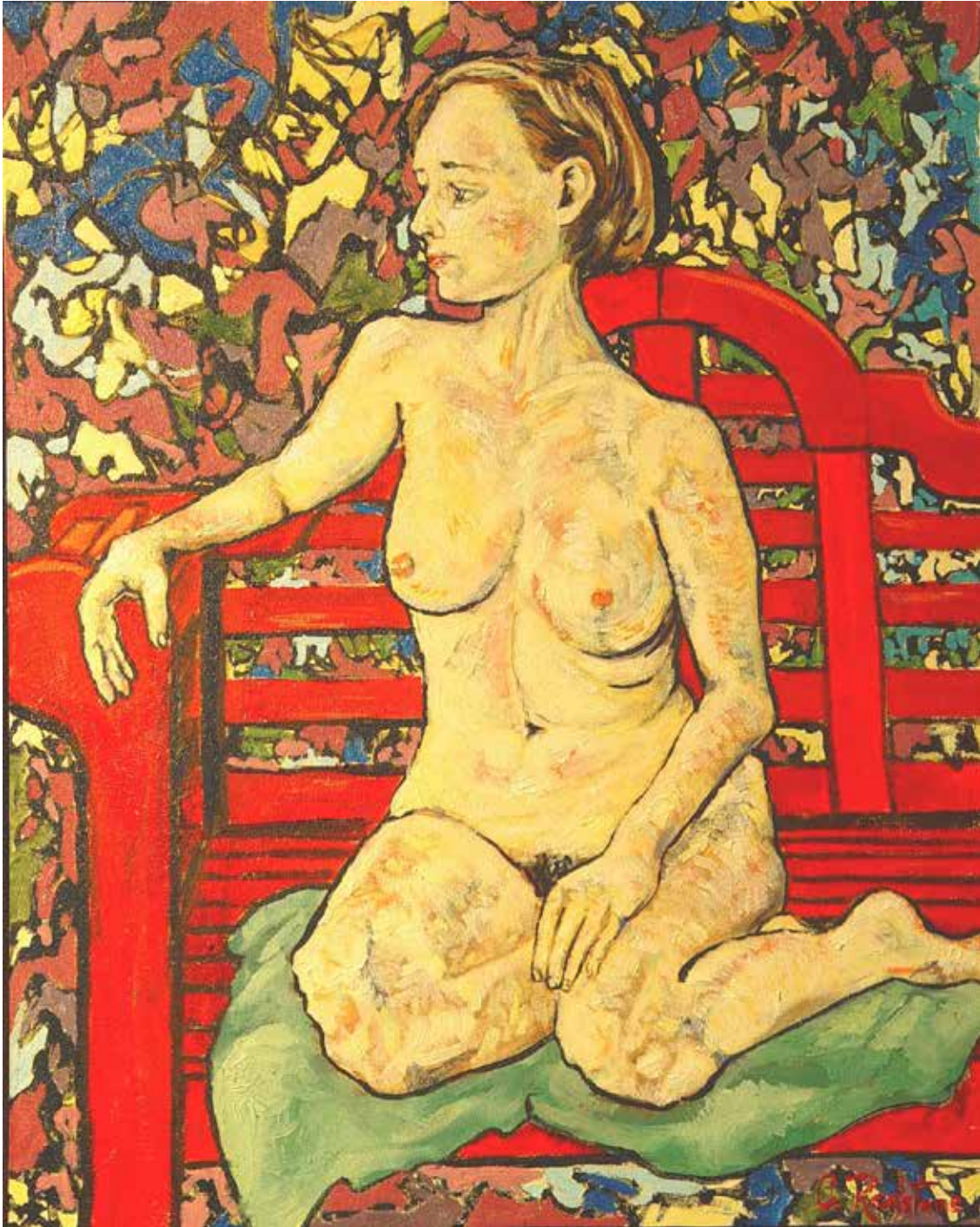


**Sentry**  
Acrylic and oil on board (wired & ready to hang)  
30 x 24 inches



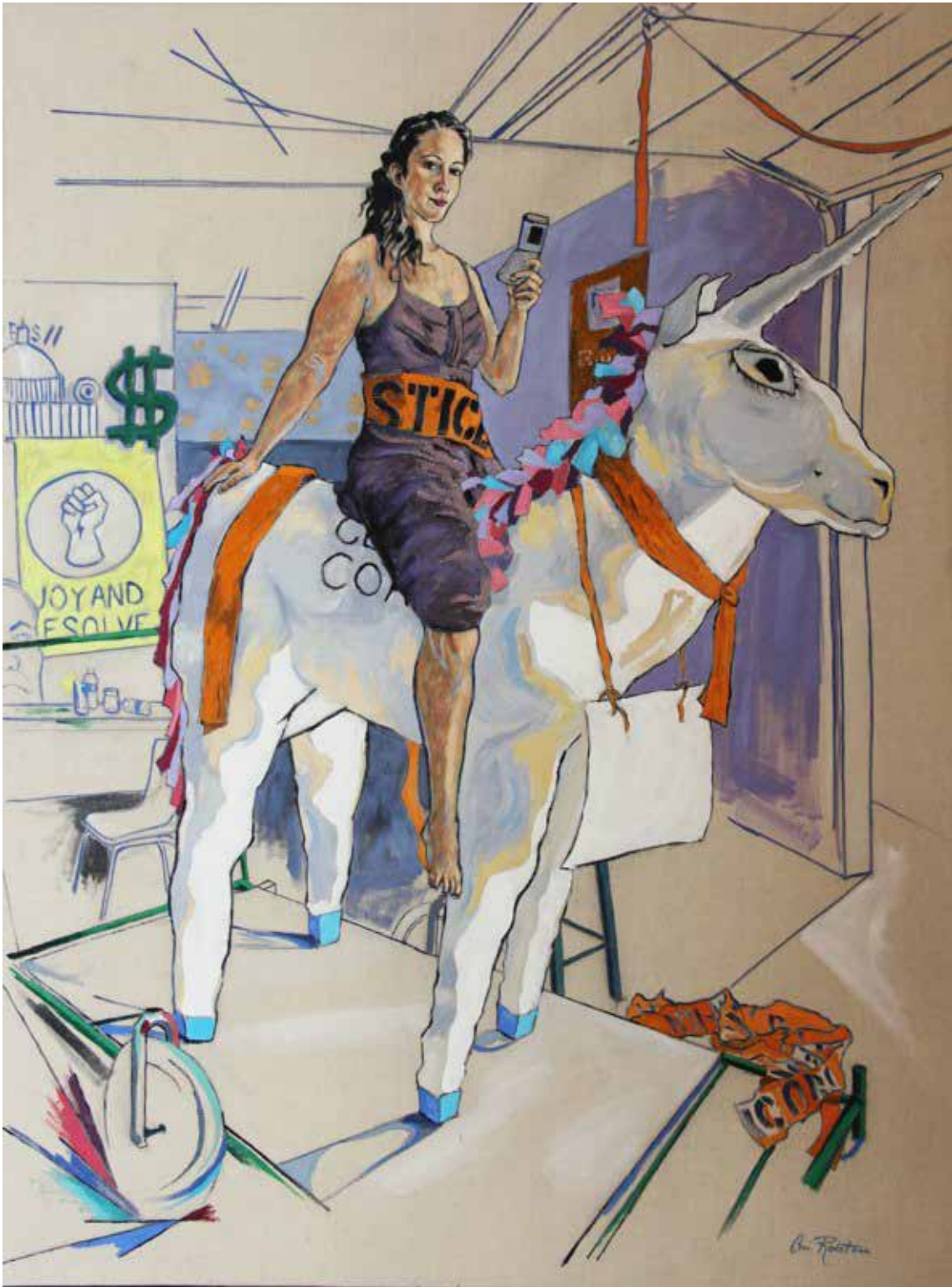
***Elanor II***

Acrylic and oil on board (wired & ready to hang)  
30 x 24 inches

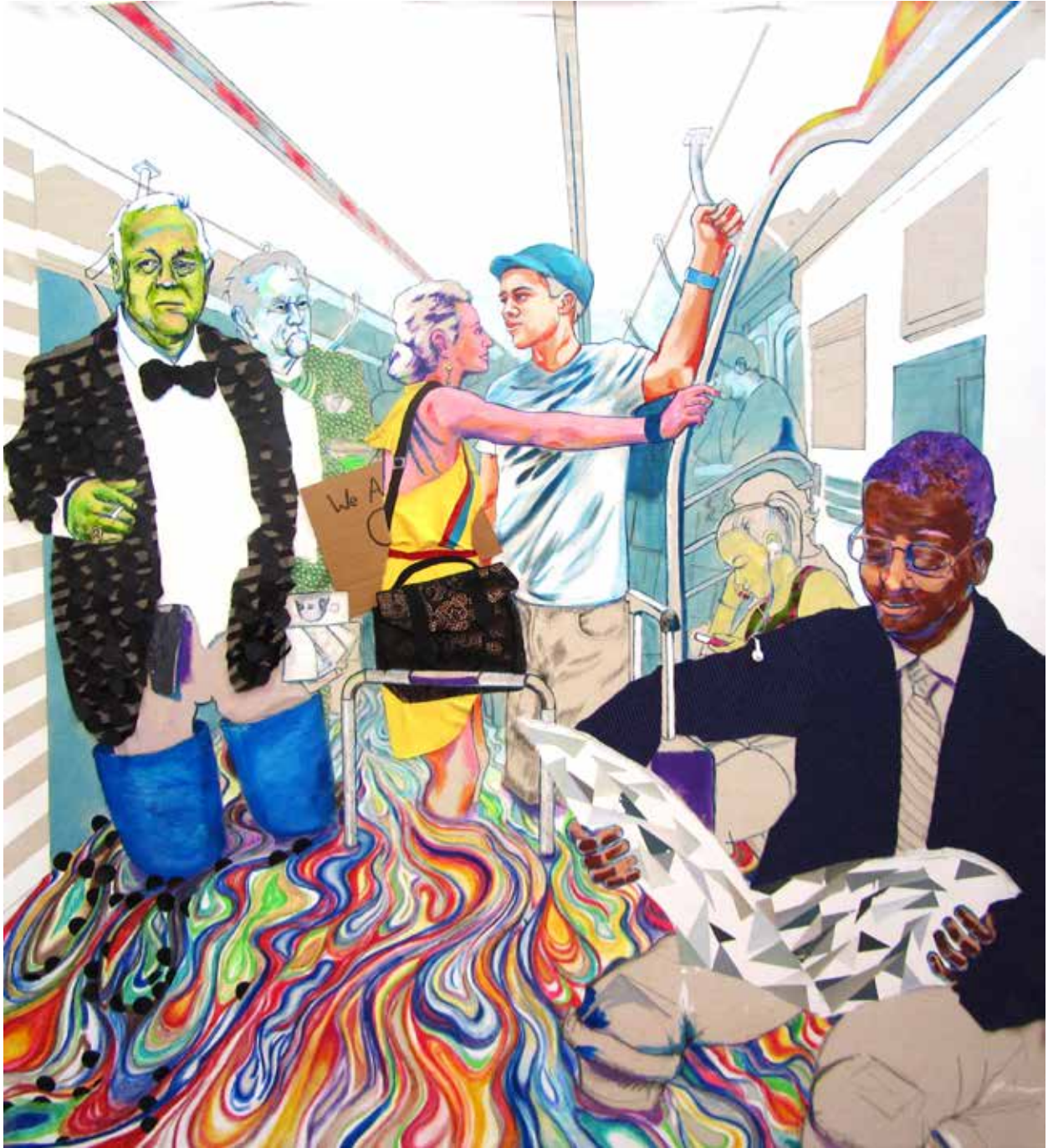


***E Rigby***

Acrylic and oil on board (framed maple gallery frame, wired & ready to hang)  
16 x 20 inches



**Yes Woman** (Laurel)  
mixed media on stretched raw linen (wired & ready to hang)  
48 x 36 inches



***The proximity of conversation***

mixed media on unstretched linen (curtain style of bamboo rod with paracord)

65 x 60 inches